

TOOLS NEEDED

Pencil
Scissors or Razor Knife
Caulk gun
Straight edge



WATERSTOPPER

INSTALLATION INSTRUCTIONS

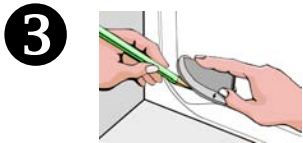
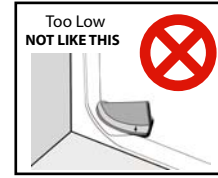
Make sure the surface is clean and dry.



1 Clean surface with supplied alcohol wipe (MUST BE DRY)



2 Place endcap LEVEL at the curb edge and inside the shower front. *Note distance from front for second endcap.*



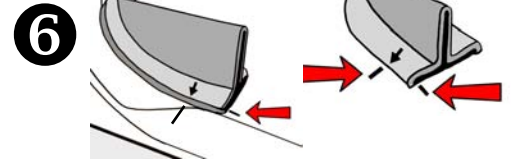
3 Draw the outline of the endcap on shower



4 NOTE the embossed arrow

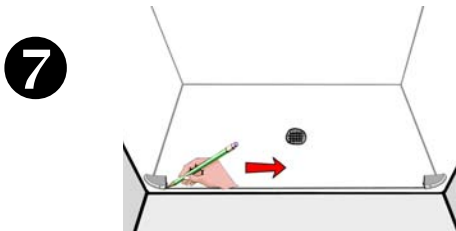


5 Mark on the floor at the arrow

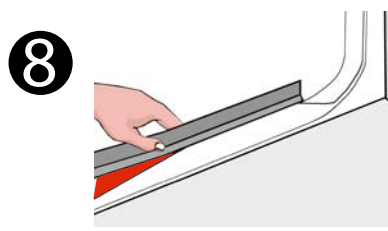


6 Mark on the floor, at the edge of the underside indent at the open end of the endcap

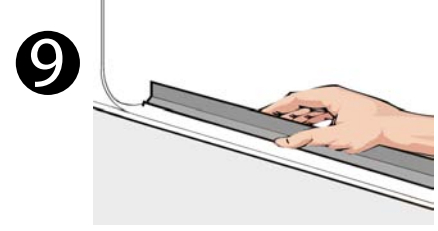
Repeat steps 2 through 6 with the second endcap at the other side of the shower



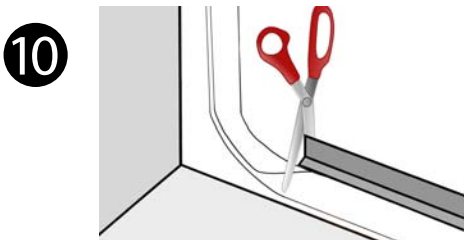
7 Draw a line that connects the two openings at the end caps (using a straight edge)



8 Peel off about 4 inches of the adhesive backing and stick the corner at the two intersecting marks.

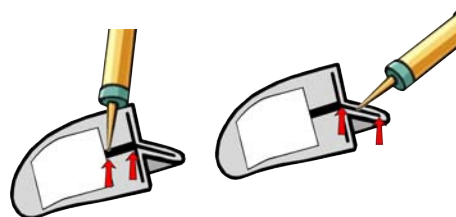


9 Using the line as your guide, continue to peel the liner as you gently stretch the material and stick the WaterStopper along the line.



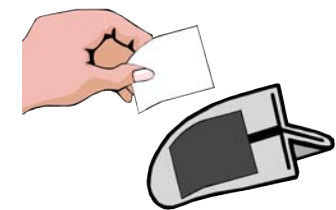
10 When you reach the arrow mark at the other end cut off any excess material and firmly press the end to the floor.

Move along the length pressing firmly down on both sides of the WaterStopper.

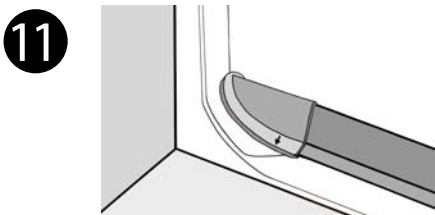


Apply silicone sealant on 1/2 inch of each of the ends of the adhered WaterStopper.

Apply silicone sealant inside the endcaps at the shoulder, the bottom and the underside slot.

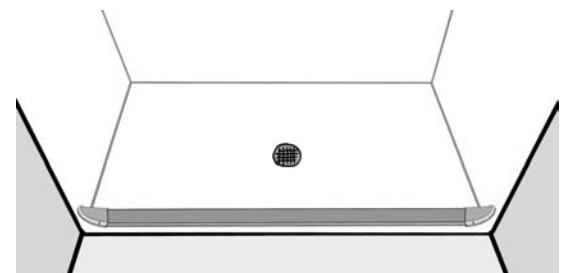


Peel the liner off the self-adhesive tape on the endcaps.



11 Stick the endcaps inside the the drawn outline. Make sure the upright rubber is slotted properly in the endcap.

Wipe off any excess silicone sealant and pencil marks with the other alcohol wipe



The WaterStopper used with a heavy duty, weighted shower curtain offers the best water retention system available.